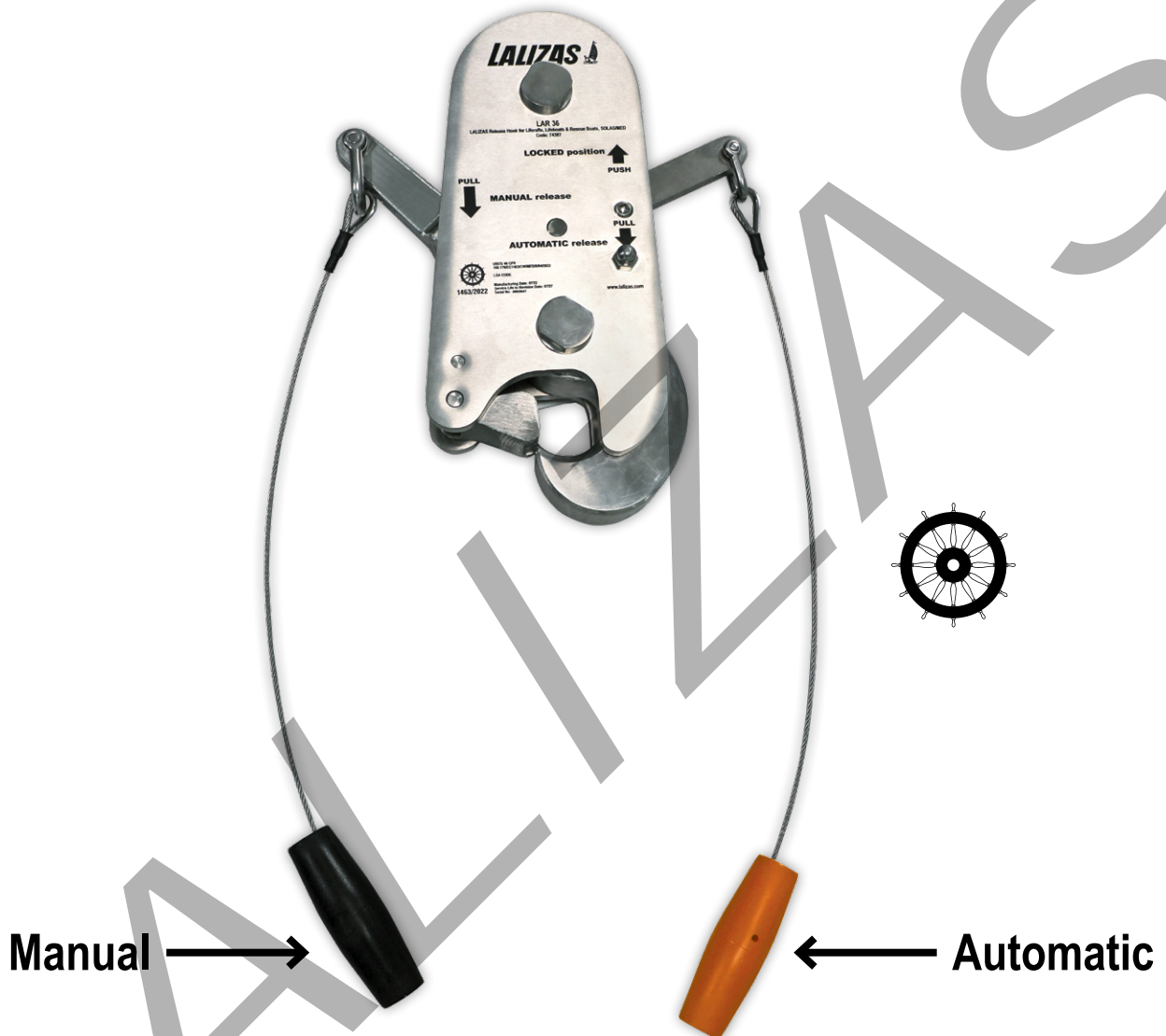


# LALIZAS

## LifeSaving



## LALIZAS Release Hook LAR 36, SOLAS/MED

Code: 74387

## INSTRUCTIONS OF USE

LALIZAS

3 Gounari, Piraeus P.C.18531, Greece. Tel.: +30 210 4226274, Fax: +30 210 4226273  
e-mail: [info@lalizas.com](mailto:info@lalizas.com), [www.lalizas.com](http://www.lalizas.com)

## TABLE OF CONTENTS

1. Technical Specifications	2
2. Description	2
3. Safety Instructions	2
4. Mounting Instructions	3
5. Operation Instructions	4
6. Service Instructions	5
7. Service Record	5
8. Spare Parts List	6

### 1. Technical Specifications

<b>Model</b>	LAR36
<b>Type</b>	Off-load, automatic release hook
<b>Material</b>	Inox 316 for high corrosion resistance
<b>Safe Working Load (kg / lb)</b>	36 kN (3670 / 8091)
<b>Weight (kg / lb)</b>	10 / 22.5
<b>Dimensions (mm / in)</b>	320 x 250 x 80 / 12.5 x 9.8 x 3.1

### 2. Description

The LAR36 is tested and certified according to SOLAS/MED provisions and LSA requirements. It is an off-load release hook, which is suitable for davit launched rescue liferafts & rescue boats, with a davit load up to 3670 kg / 8091 lb.

It has 2 possible modes of operation to allow for safe evacuation regardless of the conditions:

- **Automatic release mode:** by activating the automatic release mechanism prior to splashdown, the hook will open automatically (with a force between 5-30 kg / 11-66 lb) when the craft becomes waterborne.
- **Manual release mode:** when the craft is waterborne, but has not been auto-released (due to added load on the hook - less than 150 kg / 330 lb - while being towed or due to bad sea conditions), then the manual release mode must be activated by the user.

Remember that with this release hook, the actuating lever of the automatic release must be pulled prior to splashdown, for both automatic and manual release modes.

\*LALIZAS Release Hook LAR 36, for Liferafts is covered by EU/US Mutual Agreement (MRA), Limited to use: to Davit-Launched liferaft automatic release hook (46 CFR 160.170).

### 3. Safety Instructions

**WARNING!** Before operating the release hook, please read carefully the instructions and warning labels to prevent improper operation and to ensure safety of personnel.

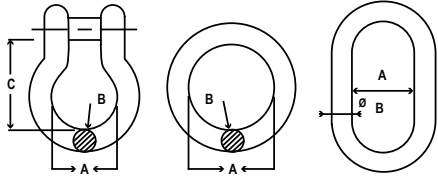
For a safe operation, all operators and persons involved in installation, maintenance and operation of the LAR36 Release Hook must read thoroughly the instructions manual and ensure that they are familiar with the operation of the product and know how to use it. The LAR36 Release Hook must be operated only by persons who understand the onboard operations. It's advised to keep a copy of this manual on board and easily available for all personnel that will be using the LAR36 Release Hook.

- Make sure that the operator fully understands how this release system works, so as to ensure safe operation.
- Always make sure that the hook is in good condition before any use.
- If any hazardous condition is found, report it immediately and put the hook out of operation.
- This unit requires limited periodic maintenance to ensure operation in an emergency.
- Do not use this unit if it has not been properly maintained.
- Maintenance should be performed only by an authorised LALIZAS Service Station.

**4. Mounting Instructions**

- Use non-rotating wire rope.
- Use a painter line where possible.
- Use a shackle Ø19 mm up to Ø27 mm.

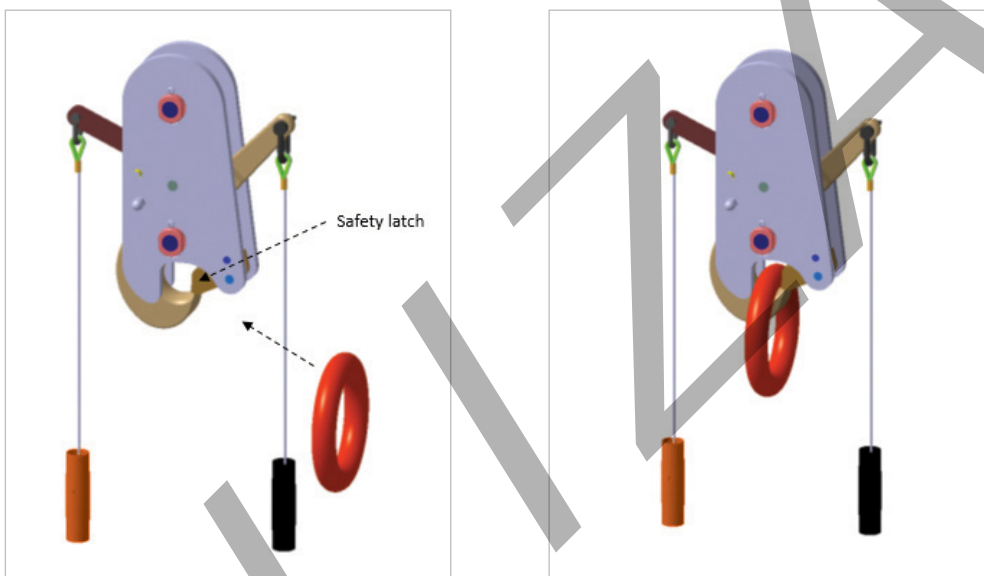
**Required dimensions of rings & shackles**



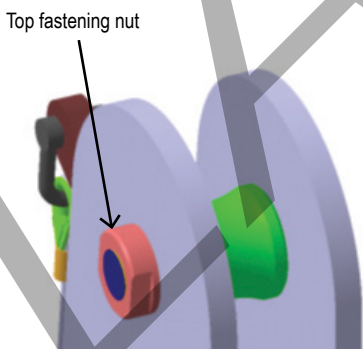
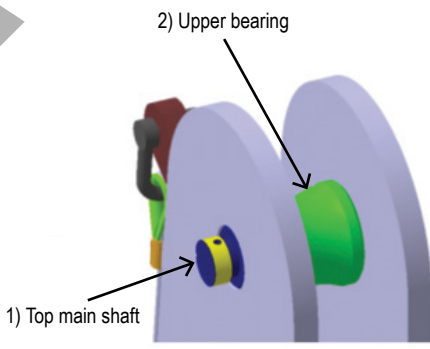
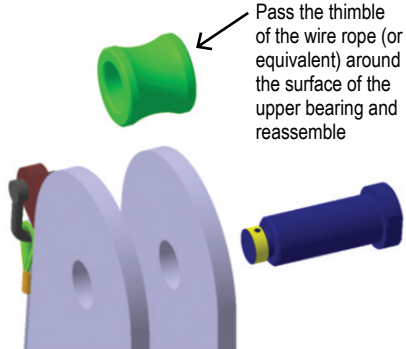
	Minimum		Maximum	
	mm	in	mm	in
<b>A</b>	50	2"	-	-
<b>B</b>	19	3/4"	27	1 1/16"
<b>C</b>	72	2 13/16"	n/a	n/a

During installation of the hook, only the top shaft should be disassembled. Full disassembly of the hook can cause un-repairable damage to the system and dangerous situations which can lead to injuries or death of personnel.

To install the lifting ring / shackle to the hook, press it against the safety latch, as shown in the following pictures:



**To install the wire rope, please follow the below instructions:**

 <p>Top fastening nut</p>	 <p>2) Upper bearing</p> <p>1) Top main shaft</p>	 <p>Pass the thimble of the wire rope (or equivalent) around the surface of the upper bearing and reassemble</p>
<p>Remove the top fastening nut</p>	<p>Remove the top main shaft (1) and the upper bearing (2)</p>	<p>Pass the thimble of the wire rope (or equivalent) around the upper bearing surface and reassemble in the reverse order</p>

**5. Operation Instructions**

**WARNING!**

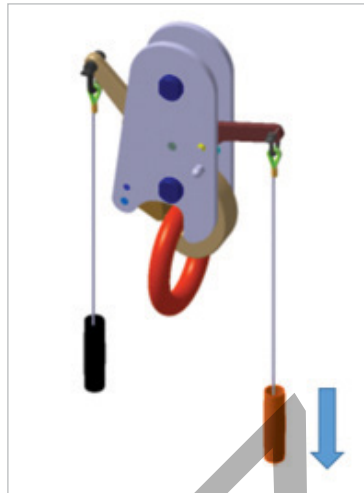
Before operating the LAR36 Release Hook make sure that both handles are on the upward “locked” position.

\*Remember that with this release hook, the actuating lever of the automatic release must be pulled prior to splashdown, for both automatic and manual release modes.

**Automatic release mode**

When lowering the liferaft / rescue boat, the hook should remain on the locked position.

Shortly before reaching the water, the automatic release (orange) handle, as shown in the picture:



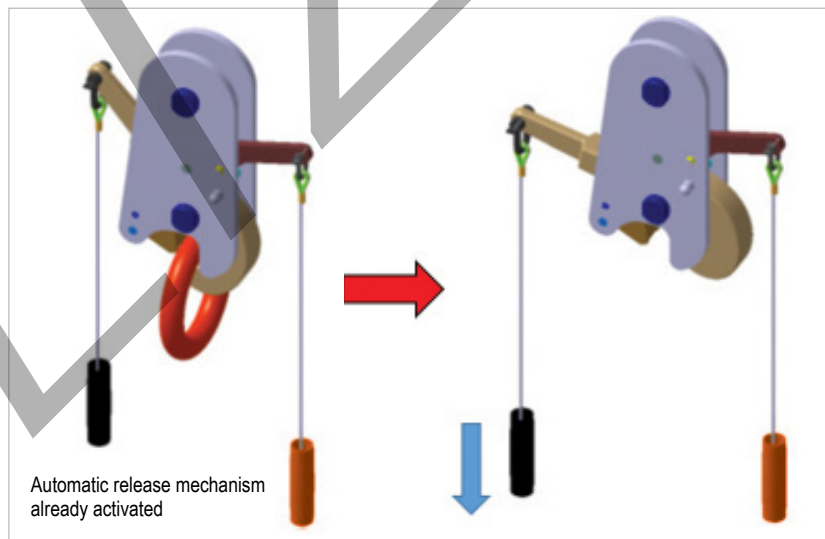
When the liferaft / rescue boat reaches the water, the load on the hook will be reduced and eventually, when the load on the hook is small enough (between 5-30 kg), the hook will open.

**Manual release mode**

In the case that the load on the hook is greater than 30 kg but less than approximately 150 kg when the liferaft / rescue boat enters the water (for example if there is a small current pulling the craft in the water), there is a possibility to open the hook by activating the manual release lever.

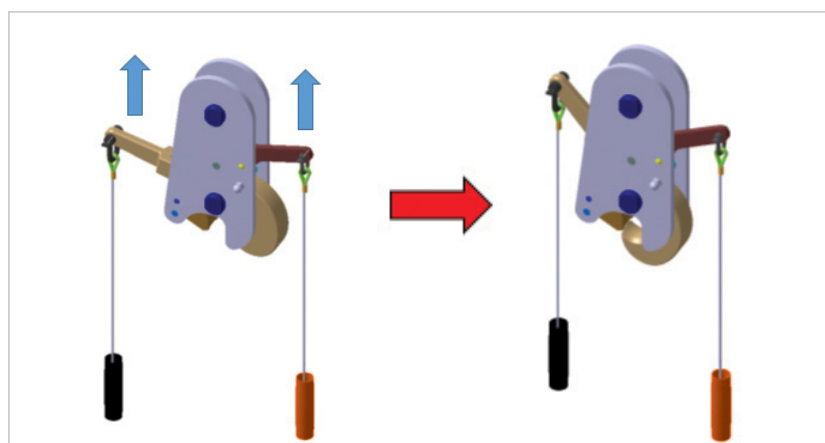
It is important to note that in order for someone to be able to activate the manual release (black) lever, first the automatic release mechanism must be activated.

The picture below shows how to activate the manual release mode (once the automatic release mode is activated):



**Resetting the hook to the locked position**

To reset the hook to the locked position, once it is already open, you must pull with two hands both levers simultaneously and firmly upwards, until the levers return to the reset position and you hear the locking mechanism “click”, as shown on the following pictures:



**6. Service Instructions**

**WARNING!**

Maintenance and regular inspection are necessary in order to preserve a good, functional condition of the hook.

Weekly inspection of the hook shall be conducted by shipboard personnel under the direction of a senior ship's officer in accordance with the maintenance manual.

**Weekly inspection consists of:**

- Visual inspection of the hook, check for defaults
- Check that there is no paint applied on any part of the hook

**Monthly inspection** of the hook shall be conducted by shipboard personnel under the direction of a senior ship's officer in accordance with the maintenance manual.

Monthly inspection consists of:

- Same as weekly inspection
- Clean if necessary by removing any build-up of salt, dirt or any other contaminant
- Check that the connection to the wire rope fall is secure
- Check that the pulling wire cables are in good condition and the D-shackles are secure
- Check that all fasteners are secure
- Check that the operating instructions and warnings on the hook are in good condition
- Check that the hoisting ring of the craft is securely connected or it is ready to be inserted quickly to the hook
- Check the automatic release function

**Annual inspection** shall be conducted by LALIZAS certified personnel or an authorised service provider.

Annual inspection consists of:

- Same as monthly inspection
- Thorough examination for satisfactory condition and operation during and after the annual operational tests of davit-launched liferafts / rescue boats

**5-Year inspection** shall be conducted by LALIZAS certified personnel or an authorised service provider

5-Year inspection consists of:

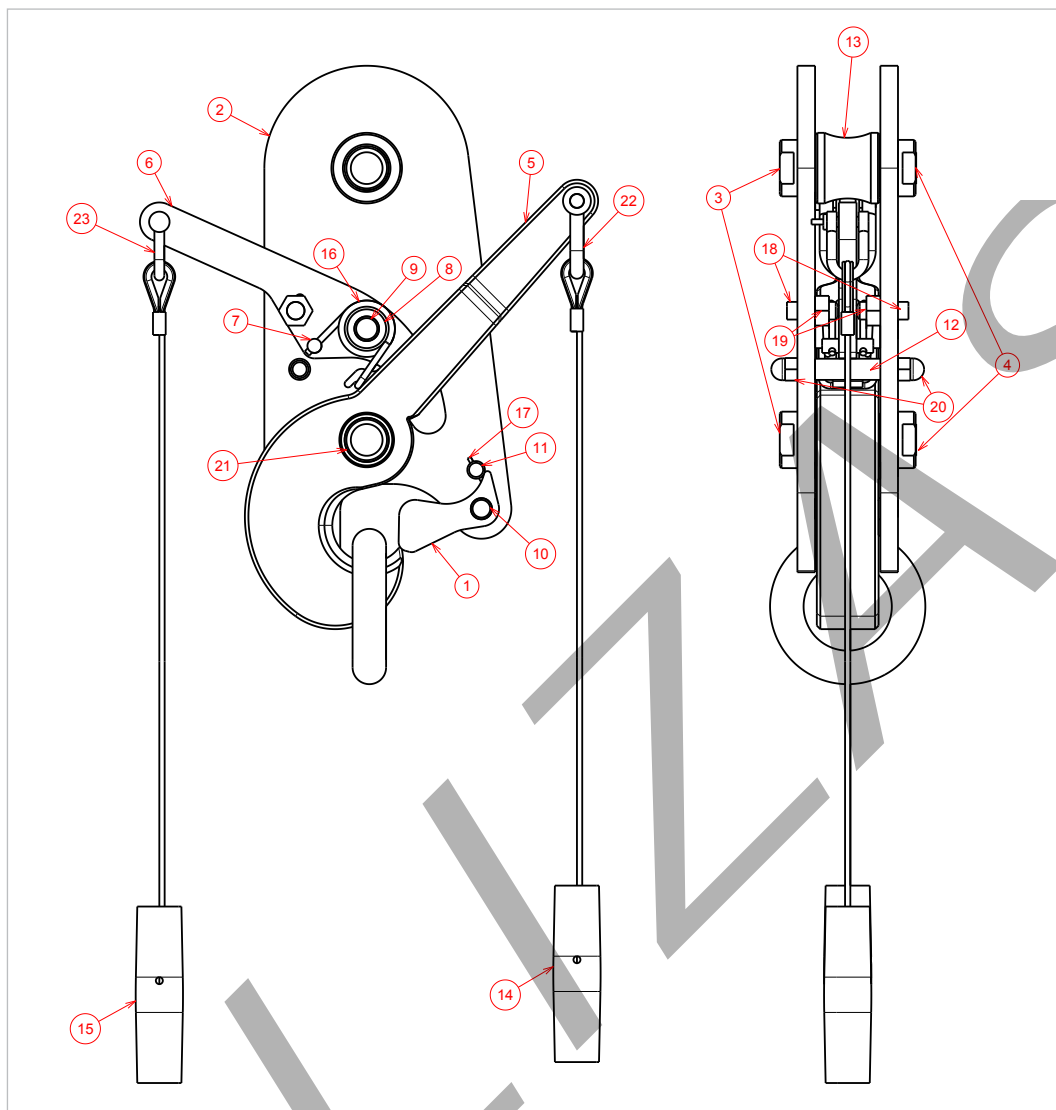
- After 5 years the hook needs to be returned to one of the Original Equipment Manufacturer (OEM) Authorised Service Partners or to the OEM for a complete general overhaul. The hook will be inspected, worn parts will be replaced and the hook will be returned after full function and overload testing. The hook will be returned with renewed certificate.

**Lifespan:** Release hook has a lifetime of 10 years, provided that maintenance is conducted according SOLAS requirements and Manufacturer's Instructions of use are followed. If any defect or damage is detected during any maintenance/ inspection the product should be replaced immediately. After 10 years of life all hooks must be returned to manufacturers.

**7. Service Record**

	Weekly	Monthly	Every 5 years
Clean and visual inspection, check for defaults	<b>X</b>		
Lubricate moving parts		<b>X</b>	
Check connection of wire rope of the hook		<b>X</b>	
Check release cords		<b>X</b>	
Check automatic release function		<b>X</b>	
Thorough examination for satisfactory condition and operation		<b>X</b>	
General overhaul by authorized service provider			<b>X</b>

8. Spare Parts List



PART NR.	CODE	DESCRIPTION	QNTY.
1	05944	Safety Latch	1
2	05928	Main Plate	2
3	05929	Main Shaft	2
4	05930	Main Thread-Fastener M18	2
5	05932	Manual Release Hook	1
6	05934	Automatic Release Lever	1
7	05935	Stop Pin	1
8	05936	Distance Bearing	2
9	05937	Shaft Pin for Automatic Release	1
10	05938	Shaft Pin for Safety Latch	1
11	05939	Stop Pin for Safety Latch	1
12	05940	Stop Pin for Manual Release Hook	1

PART NR.	CODE	DESCRIPTION	QNTY.
13	05941	Upper Bearing	1
14	05943	Cord and Handle for Manual Release	1
15	05942	Cord and Handle for Automatic Release	1
16	04220	Main Spring	1
17	04221	Safety Latch Spring	1
18	04222	Plunger M12	2
19	04223	Nut M12	2
20	04226	Dome Nut M8	2
21	05933	Bronze Bushing	1
22	91191	D shackle 8mm for manual	1
23	91190	D shackle 6mm for automatic	1